

Hot Dog It's Your Birthday Card

Stesha Bloodhart

715.497.6313

Stesha@stampinhoot.com

<https://stampinhoot.com/>



Slimline Card:

1. Begin with a 8 x 8 1/2 piece of Basic White Cardstock. Score and fold at 4.
2. Use a Paper Trimmer to cut a piece of Night of Navy Cardstock to 2 5/8 x 8 1/2 and a piece of Well Suited Designer Series Paper to 2 3/8 x 8 1/2. Adhere together and to the card with Stampin' Seal.
3. Layer and adhere a 1 x 8 1/2 piece of Basic White Cardstock to a 1 1/8 x 8 1/2 piece of Night of Navy Cardstock together and to the card with Stampin' Seal.
4. Stamp the dogs and accessories in Tuxedo Black Memento Ink onto Basic White Cardstock. Color with the following Stampin' Blends Combo Packs: Smoky Slate, Cherry Cobbler, and Night of Navy. Snip each image closely with Paper Snips. Adhere together with Mini Glue Dots and to the card with Stampin' Dimensionals.
5. Adhere a piece of Night of Navy Cardstock to a Foam Adhesive Sheet. Zip through a Mini Stampin' Cut & Emboss Machine with the Playful Alphabet Dies. Remove the protective backing and adhere to the card as shown.

Hot Dog It's Your Birthday Card

Stesha Bloodhart

715.497.6313

Stesha@stampinhoot.com

<https://stampinhoot.com/>

- Stamp the "Hot Dog! It's Your Birthday" sentiment in Night of Navy Classic Ink onto the card base as shown. (I made a boo-boo so I stamped it on a separate piece of cardstock, cut it to size, and covered my boo-boo).
- Add two 2020-2022 Misty Moonlight In Color Dots as shown.



Hot Dog It's Your Birthday Card

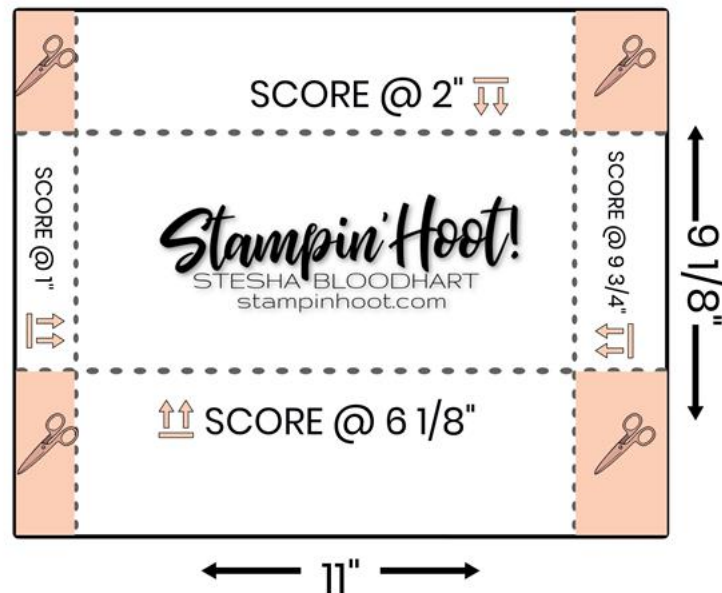
Stesha Bloodhart

715.497.6313

Stesha@stampinhoot.com

<https://stampinhoot.com/>

SLIMLINE ENVELOPE



Slimline Envelope:

1. Begin by cutting a piece of Well Suited Designer Series Paper to 9 1/8 x 11.
2. Score the 9 1/8 side at 2 and 6 1/8.
3. Score the 11 side at 1 1/4 and 10.
4. Remove the four corners with Paper Snips by following the score lines.
5. Assemble and adhere at overlays.
6. Adhere a 3 x 7 5/8 piece of Basic White Cardstock to the front of the envelope for addressing.
7. Adhere the closure with Multipurpose Liquid Glue when you are ready to send the card.

Stesha



Hot Dog It's Your Birthday Card

Stesha Bloodhart

715.497.6313

Stesha@stampinhoot.com

<https://stampinhoot.com/>



[Foam Adhesive Sheets - 152815](#)

Price: \$8.00

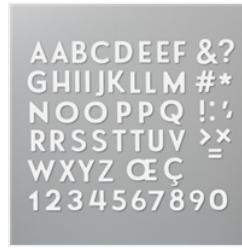
Add to Cart



[Mini Stampin' Cut & Emboss Machine - 150673](#)

Price: \$60.00

Add to Cart



[Playful Alphabet Dies - 152706](#)

Price: \$34.00

Add to Cart



[Night Of Navy Classic Stampin' Pad - 147110](#)

Price: \$7.50

Add to Cart



[Smoky Slate Stampin' Blends Combo Pack - 154904](#)

Price: \$9.00

Add to Cart



[Cherry Cobbler Stampin' Blends Combo Pack - 154880](#)

Price: \$9.00

Add to Cart



[Night Of Navy Stampin' Blends Combo Pack - 154891](#)

Price: \$9.00

Add to Cart



[Tuxedo Black Memento Ink Pad - 132708](#)

Price: \$6.00

Add to Cart



[Stamparatus - 146276](#)

Price: \$49.00

Add to Cart



[2020-2022 In Color Enamel Dots - 152480](#)

Price: \$8.00

Add to Cart



[Paper Trimmer - 152392](#)

Price: \$25.00

Add to Cart



[Stampin' Seal - 152813](#)

Price: \$8.00

Add to Cart



[Glue Dots - 103683](#)

Price: \$5.25

Add to Cart



[Stampin' Dimensionals - 104430](#)

Price: \$4.00

Add to Cart