

Flowering Tulips Dutch Door Fun Fold Thank You

Stesha Bloodhart
715.497.6313
Stesha@stampinhoot.com
<https://stampinhoot.com/>



Begin by cutting a piece of Very Vanilla Thick Cardstock to 5 1/2 x 8 1/2. Score and fold at 4 1/4.

Use a Paper Trimmer to cut a 4 1/4 (width) x 2 1/2 (height) piece from the front of card base. (Set this piece aside, you will use it later).

Adhere a 3 3/4 x 5 piece of Very Vanilla Cardstock to a 4 x 5 1/4 piece of Poppy Parade Cardstock together and to the INSIDE of the card base with Multipurpose Liquid Glue.

Adhere a 4 x 2 3/4 piece of Flowering Fields Designer Series Paper to the bottom half of the front of the card base with Multipurpose Liquid Glue.

Take the 4 1/4 x 2 1/2 piece of Very Vanilla Thick Cardstock that you previously cut from the card base and stamp the Flowering Tulips images in Mossy Meadow (leaves and stems), Poppy Parade (tulip petals, stamp the bottom layers on scrap paper first so they are lighter than the top layers), Early Espresso (tulip centers).

Flowering Tulips Dutch Door Fun Fold Thank You

Stesha Bloodhart
715.497.6313

Stesha@stampinhoot.com
<https://stampinhoot.com/>



Adhere the stamped image to a 2 3/4 x 4 1/2 piece of Poppy Parade Cardstock. Double wrap with Very Vanilla Baker's Twine, securing with a bow as shown. Adhere to the bottom half of the front of the card base panel with Stampin' Dimensionals. (Do not add dimensionals to the top portion).

Stamp the sentiment in Early Espresso Classic Ink onto a piece of Very Vanilla Cardstock. Crop with a Stampin' Cut & Emboss Machine and the Warm Wraps circle die. Adhere with Stampin' Dimensionals.

Embellish with Very Vanilla Classic Matte Dots.

Adhere a 2 3/8 x 5 3/4 piece of Flowering Fields Designer Series Paper to the outside flap of a Very Vanilla Medium Envelope with Multipurpose Liquid Glue.

Stesha

Click to
Shop Online
stampinhoot.com

Flowering Tulips Dutch Door Fun Fold Thank You

Stesha Bloodhart
715.497.6313

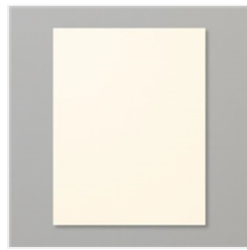
Stesha@stampinhoot.com
<https://stampinhoot.com/>



Flowering Tulips
Photopolymer
Stamp Set
(English) - 157672

Price: \$23.00

Add to Cart



Very Vanilla 8-1/2"
X 11" Thick
Cardstock -
144237

Price: \$8.25

Add to Cart



Very Vanilla 8-1/2"
X 11" Cardstock -
101650

Price: \$9.75

Add to Cart



Very Vanilla
Medium Envelopes
- 107300

Price: \$7.50

Add to Cart



Poppy Parade 8-
1/2" X 11"
Cardstock -
119793

Price: \$8.75

Add to Cart



Flowering Fields
12" X 12" (30.5 X
30.5 Cm) Designer
Series Paper -
157670

Price: \$11.50

Add to Cart



Clear Block Bundle
- 118491

Price: \$71.50

Add to Cart



Poppy Parade
Classic Stampin'
Pad - 147050

Price: \$7.50

Add to Cart



Mossy Meadow
Classic Stampin'
Pad - 147111

Price: \$7.50

Add to Cart



Early Espresso
Classic Stampin'
Pad - 147114

Price: \$7.50

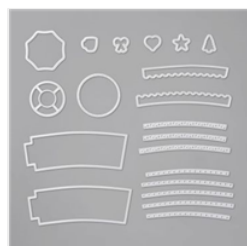
Add to Cart



Mini Stampin' Cut
& Emboss
Machine - 150673

Price: \$60.00

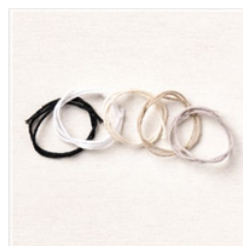
Add to Cart



Warm Wraps Dies
- 153521

Price: \$35.00

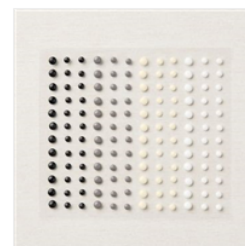
Add to Cart



Baker's Twine
Essentials Pack -
155475

Price: \$11.00

Add to Cart



Classic Matte Dots
- 158146

Price: \$7.00

Add to Cart



Paper Trimmer -
152392

Price: \$25.00

Add to Cart

Flowering Tulips Dutch Door Fun Fold Thank You

Stesha Bloodhart
715.497.6313

Stesha@stampinhoot.com
<https://stampinhoot.com/>



Multipurpose
Liquid Glue -
110755

Price: \$4.00

Add to Cart



Stampin'
Dimensionals -
104430

Price: \$4.00

Add to Cart



Flowering Fields
Suite Collection
(English) - 157685

Price: \$126.75

Add to Cart



Flowering Tulips
Bundle (English) -
157678

Price: \$52.00

Add to Cart