

# Friends are Like Seashells Card

Stesha Bloodhart

715.497.6313

[Stesha@stampinhoot.com](mailto:Stesha@stampinhoot.com)

<https://stampinhoot.com/>



1. Begin by cutting a piece of Basic White Thick Cardstock to 4 1/4 x 11. Score and fold at 5 1/2.
2. Zip a 4 x 5 1/4 piece of Basic White Cardstock through a Stampin' Cut & Emboss Machine tucked inside the Bark 3D Embossing Folder.
3. Gently rub a Blending Brush with Balmy Blue Classic Ink over the top of the embossed card stock so that they raised portions take on some color.
4. Use Blending Brushes to add Mint Macaron, Garden Green, and Balmy Blue Classic Ink to a 4 x 5 1/4 piece of Basic White Cardstock.
5. Flick with drops of alcohol and water. Dab up the water with a paper towel after its set for approx. 30 seconds.
6. Crop with a Stampin' Cut & Emboss Machine and the Seaside Seashells Die.
7. Carefully place the die-cut piece inside the Seashells 3D Embossing Folder and zip it through a Stampin' Cut & Emboss Machine.
8. Gently rub a sanding block over the top of the embossed design to distress some of the raised edges.

# Friends are Like Seashells Card

Stesha Bloodhart

715.497.6313

[Stesha@stampinhoot.com](mailto:Stesha@stampinhoot.com)

<https://stampinhoot.com/>



9. Adhere to the card with Stampin' Dimensionals.
10. Use a Blending Brush to add Balmy Blue Ink to a piece of Vellum Cardstock. Set the ink with a Heat Tool. Rub with an Embossing Buddy or Baby Powder.
11. Stamp the seashell image and sentiment in Versamark Ink. Cover with White Stampin' Emboss Powder. Set with a Heat Tool.
12. Use a Stampin' Cut & Emboss Machine to crop the sentiment (Seasonal Labels Dies) and the seashell (Seaside Seashells Dies). Use the same dies to crop a piece of Basic White Cardstock.
13. Adhere the vellum to the Basic White Cardstock with a small amount of Multipurpose Liquid Glue. Layer and adhere to the card with Stampin' Dimensionals.
14. Tie a bow of White Baker's Twine and adhere as shown with a Mini Glue Dot.
15. Embellish with Rhinestone Waves Basic Jewels.

## Stesha

Click to  
**Shop Online**  
stampinhoot.com

# Friends are Like Seashells Card

Stesha Bloodhart

715.497.6313

[Stesha@stampinhoot.com](mailto:Stesha@stampinhoot.com)

<https://stampinhoot.com/>



Friends Are Like Seashells Bundle (English) - 159516

Price: \$54.00

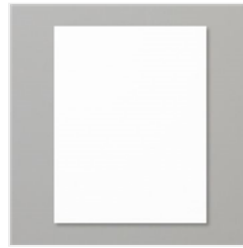
Add to Cart



Friends Are Like Seashells Photopolymer Stamp Set (English) - 158203

Price: \$26.00

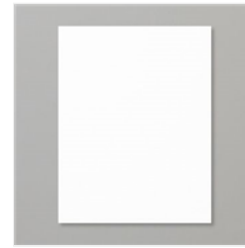
Add to Cart



Basic White 8-1/2" X 11" Thick Cardstock - 159229

Price: \$8.25

Add to Cart



Basic White 8-1/2" X 11" Cardstock - 159276

Price: \$9.75

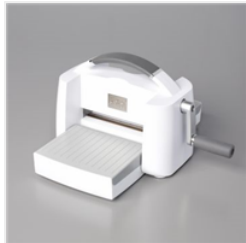
Add to Cart



Vellum 8-1/2" X 11" Cardstock - 101856

Price: \$10.00

Add to Cart



Stampin' Cut & Emboss Machine - 149653

Price: \$120.00

Add to Cart



Seaside Seashells Dies - 156095

Price: \$34.00

Add to Cart



Seashells 3D Embossing Folder - 154309

Price: \$9.00

Add to Cart



Bark 3D Embossing Folder - 155431

Price: \$10.00

Add to Cart



Seasonal Labels Dies - 156299

Price: \$38.00

Add to Cart



Blending Brushes - 153611

Price: \$12.00

Add to Cart



Balmy Blue Classic Stampin' Pad - 147105

Price: \$7.50

Add to Cart



Garden Green Classic Stampin' Pad - 147089

Price: \$7.50

Add to Cart



Mint Macaron Classic Stampin' Pad - 147106

Price: \$7.50

Add to Cart



VersaMark Pad - 102283

Price: \$9.50

Add to Cart

# Friends are Like Seashells Card

Stesha Bloodhart

715.497.6313

[Stesha@stampinhoot.com](mailto:Stesha@stampinhoot.com)

<https://stampinhoot.com/>



Basics Embossing  
Powders - 155554

Price: \$18.00

Add to Cart



Heat Tool - 129053

Price: \$30.00

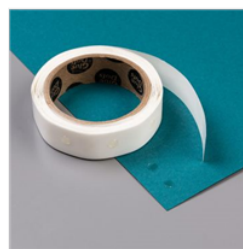
Add to Cart



Baker's Twine  
Essentials Pack -  
155475

Price: \$11.00

Add to Cart



Mini Glue Dots -  
103683

Price: \$5.25

Add to Cart



Multipurpose  
Liquid Glue -  
110755

Price: \$4.00

Add to Cart



Stampin'  
Dimensionals -  
104430

Price: \$4.00

Add to Cart



Rhinestone Waves  
Basic Jewels -  
159396

Price: \$6.50

Add to Cart